



# Welcome to Discoverers Year R

September 2018-19



## Teaching and Learning Staff



**Co-Headteacher:** Mr Colin Frost  
**Co-Headteacher:** Mrs Caroline Webb

## Early Years

**The Early Years Foundation Stage at Delce Academy consists of one class:** Discoverers (Year R) is the first statutory school class.

**Key Stage 1 consists of two Year groups:** Explorers (Year 1) and Inventors (Year 2).

**The Teaching Team is:**



**Early Years Phase Lead:**  
Mrs Hannah Chandler



**Discoverers:** Mrs Tracey Notley  
(Year R Class Teacher)



**Teaching and Learning Support Staff:**

Mrs Sherri Baker and  
Mrs Jane Fukaya



**Explorers:** Miss Natalie Matthews  
(Year 1 Class Teacher)



**Inventors:** Miss Sabina Nawell  
(Year 2 Class Teacher)

The classes will work together to support the children's learning journey and share learning experiences. Any member of staff will be happy to help and are available to discuss any concerns or queries about your child's learning.

## The School Day

The safety of your children is very important to us. In order for you to help us ensure the safety of all children and adults at the beginning of each day we have set procedures and routines in place.

### Beginning of the Day:

- Children are permitted on site from 8:30am - 8:45am under parental supervision
- The school day starts at 8:45am. When the school bell goes and the Early Years Playground Gate will open. The gate will close at 8:55am. If your child arrives at school after 8:55am then your child will be marked as late in the register.



The Early Years Playground Gate onto the garden area outside the Discoverers classroom will be opened and staff will be there to welcome your child into the classroom. It is vital that children are on time for school so that they can enter each school day calmly and start the day's learning positively.

### End of the Day:

- Parents/carers of Early Years children wait on the Early Years Playground.
- Children of parents that have been unavoidably delayed will be taken to the Academy Office to await safe collection

### What do I do if I need to drop my children off before the start of school?



## CITY WAY NURSERY

City Way Nursery offers a breakfast club that runs every morning between 7:40 and 8:45 at Delce Academy. Further details are available from the Academy Office or alternatively visit their website at:

<http://www.citywaynursery.co.uk/breakfast-afterschool-club/4593791132>

### What do we do if it is raining heavily in the morning?

The School gates will open at the usual time of 8:30am. This is the earliest children may come through the Garden Gate into the Discoverers classroom.

### What do we do if it is raining heavily in the morning?

Please remain on the Early Years Playground. All children will be brought out through the Discoverers door. Please do not stand on the Discoverers ramp, these areas become congested very quickly making it extremely difficult for a secure handover.

In the event of an extreme circumstance we will endeavour to send a text message to advise you of a change to the routine.



**Early Years Playground**



**Attendance Officer:**  
Miss Jo Condon



**Home School Support Worker (HSSW):**  
Mrs Jane Mason

If you know your child will be late or absent please contact Miss Jo Condon in the Academy office either via an email at **A@DelceAcademy.co.uk** or by telephoning and leaving a message on the answer phone. She will contact any parent when a child is absent and we have not been informed. If you have any problems with getting your child to school please contact Mrs Jane Mason our Home School Support Worker who will be available to discuss any possible solutions.

## Enrichment of the Curriculum - Trips and Visits

To support the enrichment of your child's curriculum the Discoverers will have access to learning off site, this could be within the local community or further afield. All trips and visits will be shared with you via letter.



If you have any interesting learning experiences that you would like to share with the class please offer your time to provide something extra for the children. This may be time for hearing readers, you may have green fingers and be able to support in the garden, have strong construction or design skills, artistic talents; the list is endless! Any offers of support would be appreciated as experiences such as these all provide the children with key skills for their learning development.

## Schoolgateway

School Gateway is the online system we use which allows you to make safe and secure online payments for trips and visits. It is easy for parents to use and even easier to set up. Please see the 'Parents guide on using the School Gateway' pamphlet included in this pack for more information.



## Snack Time

The children will be provided with a free healthy snack during the morning and afternoon. The snack will be a piece of fruit. The children have access to drinking water throughout the day.



To ensure the children have access to a balanced diet at Delce Academy we subsidise the government funded fruit scheme with additional foods - a carbohydrate such as toast, breadstick or cracker and some dairy such as cheese.

To sustain our ability to provide a well- balanced diet for the children we ask for a parental contribution of £5 per term or £30 for the academic year.

This can be paid for online using the School Gateway app.

## Lunch Time

Lunch time begins at **11:30 a.m. until 12:30 p.m.** All Early Years classes will eat together in the Dining Hall. They will have access to outside space to play until the end of lunch time.



School dinners are provided free of charge for **ALL** Early Years classes. If you choose to opt out please provide your child with a healthy packed lunch which they will eat with their peers in the Dining Hall.

## Cool Milk

Children under the age of five who are registered in school have access to daily free school milk. At Delce Academy this will be provided at the children's snack time. Milk provides a number of health benefits and social opportunities that ensure children get the most out of their school day.

If you wish your child to have daily milk during their snack time after their fifth birthday you will need to register and pay directly to the milk supplier Cool Milk. Additional registration leaflets and information are available from the Academy Office.



## Merit Assembly and Rewards



The children will take part in Merit Assembly on a Friday. This is a special celebration for the children who have worked above their success criteria throughout the week; all children nominated receive a merit certificate to share their successes at home!

## Positive and Negative Consequences

In recognition of positive behaviour for learning and achievements within the Early Years children will receive house point stickers. These can be collected and converted to prizes to be a positive consequence for the choices children make at Delce Academy.



Inappropriate choices - classroom behaviour



To support the children in understanding there are negative consequences for inappropriate learning or behaviour choices at Delce Academy we have a behaviour pyramid. This outlines a consequence for different levels of behaviour. If a child is placed on the pyramid level 4 or above parents are informed.

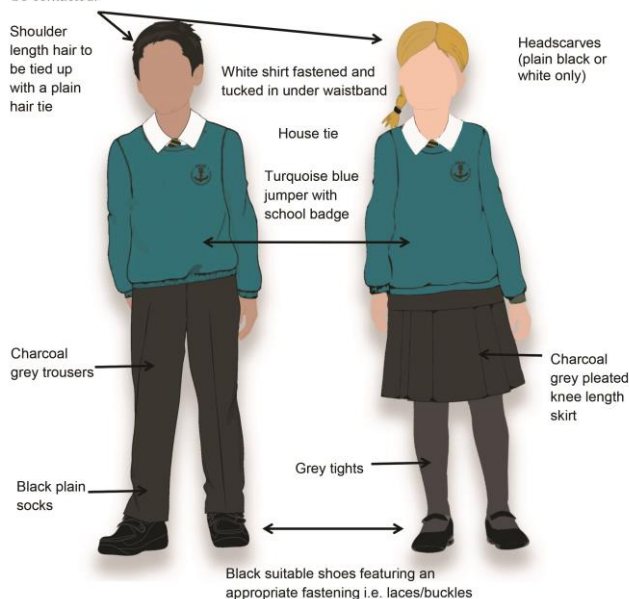
## Dressing for School

Our school uniform reflects the seasons with a winter and summer uniform. By wearing the correct uniform the children are smartly dressed and are prepared for their learning day. Staff will monitor children's uniform daily. Children that are not following the uniform policy will be expected to provide an explanation and parents/carers will be contacted. School uniform can be purchased online at:

<https://delce-academy.schoolyardonline.co.uk>

### Winter Uniform

At Delce Academy, children are proud of their school uniform; and by wearing a uniform all pupils feel part of the school community. By wearing the correct uniform the children are smartly dressed and are prepared for their learning day. Staff will monitor children's uniform daily. Children that are not following the uniform policy will be expected to provide an explanation and parents/carers will be contacted.



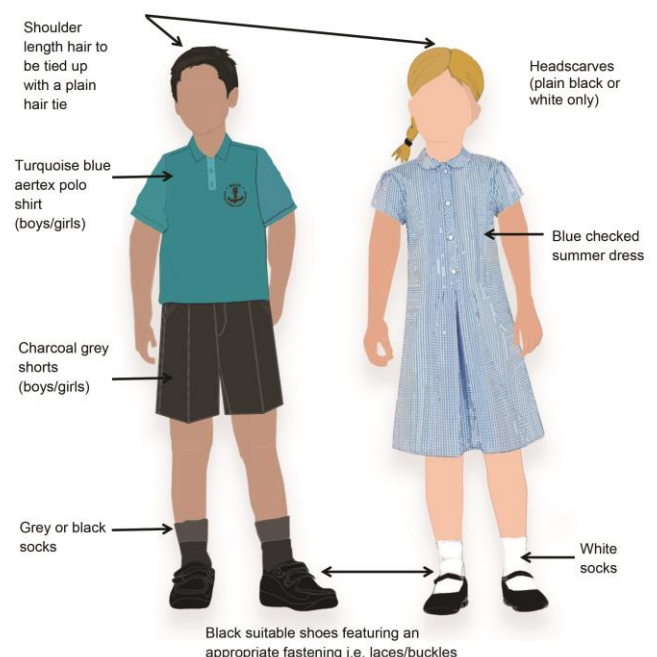
#### Footwear:

- X Trainers
- X Boots
- X Ballet pumps
- X Canvas shoes

#### Jewellery:

- ✓ Small stud earrings
- ✓ Watch

### Summer Uniform



#### Footwear:

- X Trainers
- X Flip flops
- X Ballet pumps
- X Canvas shoes

#### Jewellery:

- ✓ Small stud earrings
- ✓ Watch

#### Variations:

- ✓ Short sleeve white shirt with house tie
- ✓ Charcoal grey pleated knee length skirt

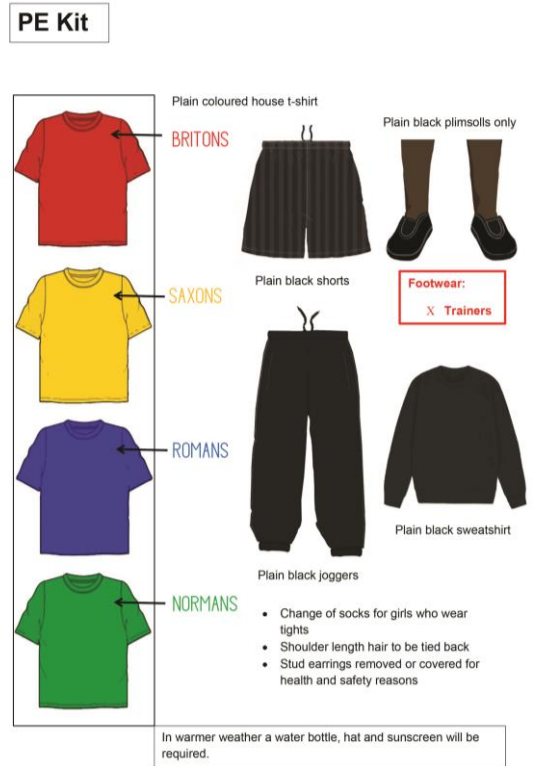
## PE Kit

To support the children in taking part in PE they will be expected to come to school in their PE kit with their school uniform in their school bags ready to change into before coming home. This supports the children to develop key life skills, becoming more independent in taking care of their possessions and dressing and undressing independently. In support of your child's developing independence, they would benefit from a PE bag that was named so that they are prepared on PE days.

The PE kit is outlined in the uniform leaflet, coloured house team T-shirts can be purchased online at:

<https://delce-academy.schoolyardonline.co.uk>

**NB: Please name all uniform and PE kit so that children can be responsible for their things.**



## PE Team

Once the children are settled into the routines and expectations of the Discoverers classroom the children will start to take part in weekly PE activities delivered by the PE team at the Academy – the date this will commence will be shared via letter.

Mr Hayden Lewis  
(PE Teacher)



Miss Amanda Haggerty  
(PE Teacher)



Mr Andrew Heath  
(PE Teacher)



## House Teams:

Delce Academy actively encourages the children to develop citizenship skills through being part of a house team.

**There are four house teams:** Britons, Normans, Romans, Saxons,



Your child will be allocated their house team on starting school and this will remain their team throughout their school life. House teams are often used to organise whole school events such as sports day and assembly.

## Delce Academy Parent Teacher Association

Delce Academy is fortunate to have a number of dedicated parents and carers who actively support the Academy in raising funds for additional resources and experiences for our children. They are always looking for new families to join and support their events. If you are interested in getting involved please contact the school office for further details.

### **Book Bags, Water Bottles and Spare Clothing**

Each child is encouraged to have a school bag for taking things home. The children may bring a rucksack big enough for their reading book and letters. All items need to be clearly named for the children to identify and take care of their property.

Please provide your child with a spare set of clothing in case of any little accidents or your child needs changing for an activity. These can be left on your child's peg in a named bag.

It is important to keep hydrated, especially during the warmer weather; Academy water bottles can be purchased from the Academy Office and must be clearly named.

### **Reading Books**

Reading is a vital area of learning for all children but especially in the Discoverers where the children are building their knowledge of reading skills and letter patterns (phonics). They will be using Read, Write Inc (RWInc) programme to support their reading skills. The children are expected to read regularly at home to support their understanding of different types of books (fiction and non-fiction) and reinforce their application of phonics skills.

In order for your child to become a successful reader they need to be reading daily and we request your support in this.

Your child's reading will be recognised through the Early Years reader achiever programme.



### **Home Learning**

We actively encourage the children to take part in home learning.

A weekly newsletter will make some suggestions about different learning opportunities that you and your child could do.

The children will be set weekly challenges which support the skills that they have been exploring throughout the week. These tasks will be set on a Friday and the expectation is that these are returned the following Wednesday to be celebrated.



### **Parents as Partners**

We actively seek to involve parents in their child's learning.

We regularly hold Open Classroom events where you are welcome to come and share in the learning that we have undertaken in Discoverers' class. These are special times where the children love to share their classroom and the different learning experiences that they have had. We welcome all members of the family to come and join us.

Pupil Learning Conferences are held throughout the year where you will receive an appointment to meet with your child's class teacher. This is an opportunity to discuss the attainment and progress of your child. If you would like to discuss your child's progress outside of these meetings, you are welcome to make an appointment to see your child's class teacher at any time.

In the Early Years we see the children's learning journeys as a partnership between home and school, welcoming your views and celebrations of the children's achievements at home. Please share any new steps in progress or achievements with your child's class teacher.

In Term 6 you will receive an end of year report outlining progress and attainment.

We will also offer a range of workshops to support you and your child during their time in the Early Years.



## The Office Team



Mrs Leah Smy Office Administrator

Mrs Julie Tingley Office Manager

**Contact Us:**



[www.delceacademy.co.uk](http://www.delceacademy.co.uk)



**01634 845242**

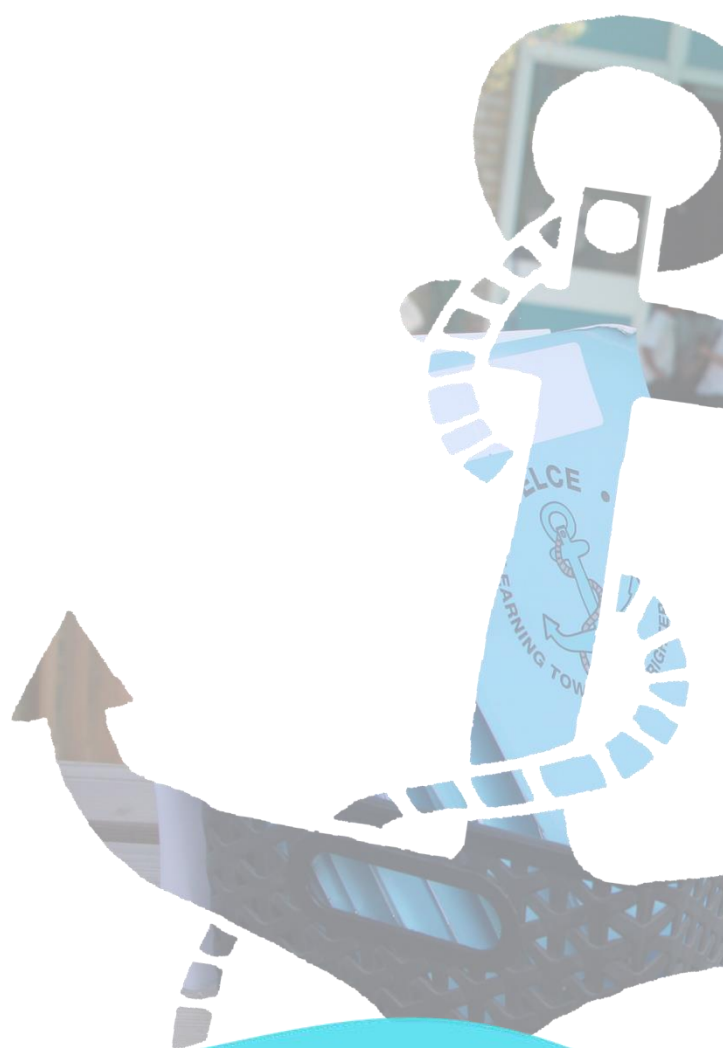
The Academy office can be accessed using the entrance on The Tideway. We are here during term time and are happy to assist with any queries you may have.





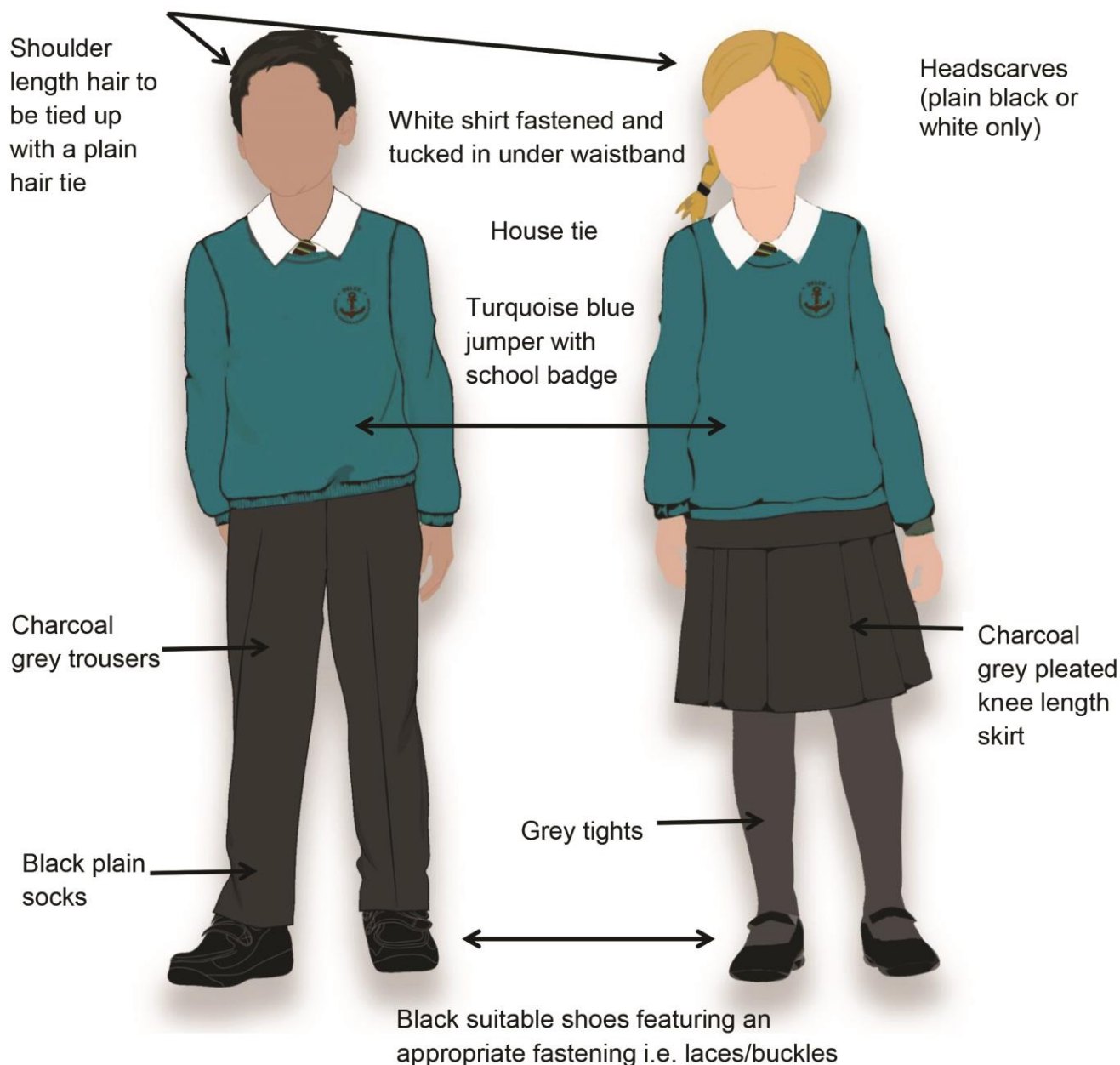
# Uniform Policy

September 2018-19



# Winter Uniform

At Delce Academy, children are proud of their school uniform; and by wearing a uniform all pupils feel part of the school community. By wearing the correct uniform the children are smartly dressed and are prepared for their learning day. Staff will monitor children's uniform daily. Children that are not following the uniform policy will be expected to provide an explanation and parents/carers will be contacted.



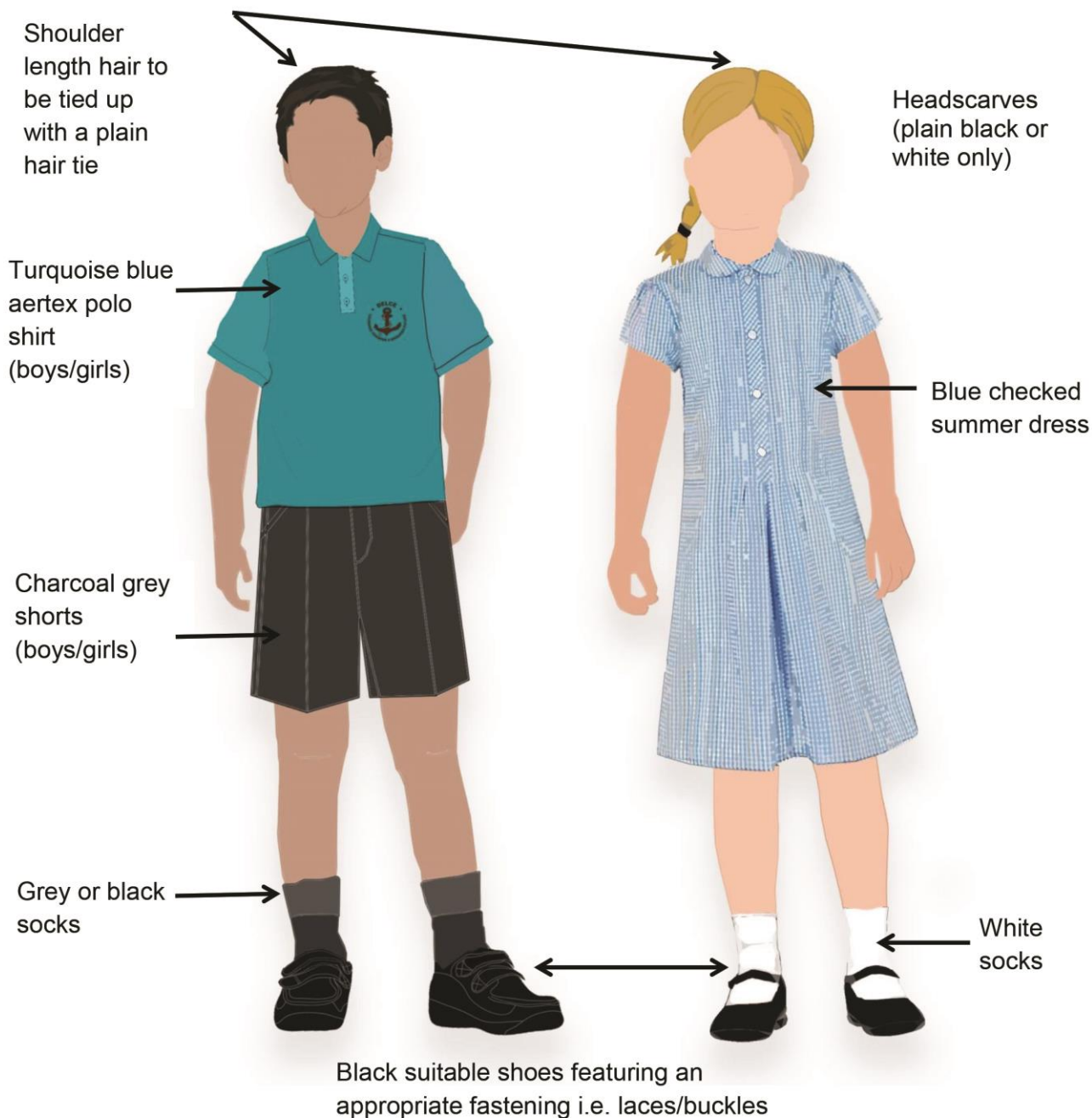
## Footwear:

- X Trainers
- X Boots
- X Ballet pumps
- X Canvas shoes

## Jewellery:

- ✓ Small stud earrings
- ✓ Watch

# Summer Uniform



## Footwear:

- X Trainers
- X Flip flops
- X Ballet pumps
- X Canvas shoes

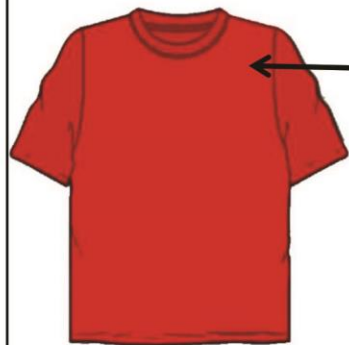
## Jewellery:

- ✓ Small stud earrings
- ✓ Watch

## Variations:

- ✓ Short sleeve white shirt with house tie
- ✓ Charcoal grey pleated knee length skirt

# PE Kit



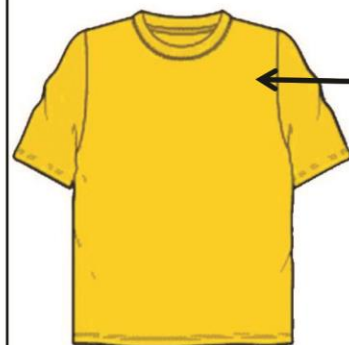
Plain coloured house t-shirt

BRITONS



Plain black shorts

Plain black plimsolls only



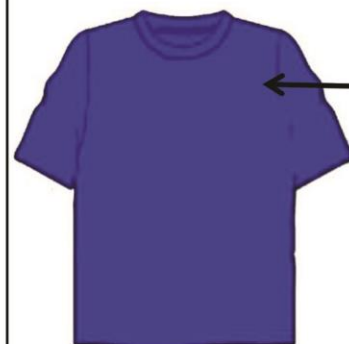
SAXONS



Plain black joggers

Footwear:

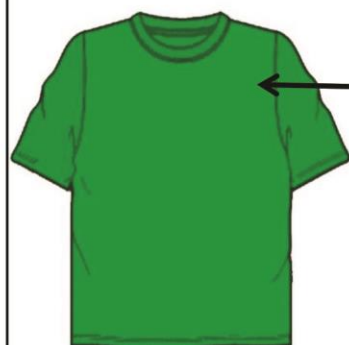
X Trainers



ROMANS



Plain black sweatshirt



NORMANS

- Change of socks for girls who wear tights
- Shoulder length hair to be tied back
- Stud earrings removed or covered for health and safety reasons

In warmer weather a water bottle, hat and sunscreen will be required.



## Delce Academy Uniform 2018

### Turquoise Sweatshirt with logo

24"	26"	28"	30"	32"	34"	S	M
£9.50	£9.50	£9.50	£9.50	£9.50	£10.05	£11.85	£11.85

### Turquoise Cardigan with logo

24"	26"	28"	30"	32"	34"
£12.05	£12.05	£12.05	£12.05	£12.05	£12.45

### Turquoise Poloshirt with logo

5/6yr	7/8yr	9/10yr	11/12yr	13yr	S	M	L
£9.40	£9.40	£9.40	£9.40	£9.40	£11.50	£11.50	£11.50

### House T-shirt

5/6yr	7/8yr	9/11yr	12/13yr	S
£3.25	£3.25	£3.25	£3.25	£3.90

### House Tie

Norman	Saxons	Britons	Romans
£3.50	£3.50	£3.50	£3.50

### Black PE Sweatshirt (plain)

5/6yr	7/8yr	9/10yr	11/13yr	Small	Medium
£7.50	£7.50	£7.50	£7.50	£9.50	£9.50

### Black PE Joggers (plain)

5/6yr	7/8yr	9/10yr	11/12yr	13yr	Small
£9.25	£9.25	£9.25	£9.25	£9.25	£10.70

### Black PE Shorts (plain)

22/24"	26/28"	30/32"	34/36"	38/40"
£4.95	£4.95	£4.95	£4.95	£4.95

Order online at [delce-academy.schoolyardonline.co.uk](http://delce-academy.schoolyardonline.co.uk)

## Delce Academy Uniform 2018

### Boys Shirts (Twinpack)

11"	12"	13"	14"	15"	16"
£13.20	£13.20	£13.20	£13.20	£14.95	£14.95

### Girls Short Sleeve Blouses (Twinpack)

24"	26"	28"	30"	32"	34"	36"	38"
£13.20	£13.20	£13.20	£13.20	£13.20	£13.20	£13.20	£14.95

### Boys Trousers (Grey)

3/4yr	5/6yr	7/8yr	8/9yr	10/11yr	12/13yr
£13.55	£13.55	£13.55	£13.55	£13.55	£13.55

### Girls Trousers (Grey)

3/4yr	5/6yr	7/8yr	9/10yr	11/12yr	13yr
£15.45	£15.45	£15.45	£15.45	£15.45	£15.45

### Girls Junior Skirt (Grey)

3/4yr	4/5yr	6/7yr	8/9yr	9/10yr	11/12yr
£12.95	£12.95	£12.95	£12.95	£12.95	£12.95

### Royal Summer Check Dress

3/4yr	4/5yr	5/6yr	6/7yr	7/8yr	8/9yr	9/10yr	10/11yr	11/12yr	12/13yr
£14.15	£14.15	£14.15	£14.15	£14.15	£14.15	£14.15	£14.15	£14.15	£14.15

### DELIVERY INFORMATION

Delivery to school	£2.40
Delivery to home	£7.20

Order online at **[delce-academy.schoolyardonline.co.uk](http://delce-academy.schoolyardonline.co.uk)**